

TOYNBEE STUDIOS SPACE HIRE

These rates apply 1 April 2022 – 31 March 2023



Steve Whitson Studio

4th floor, 13m x 11.5m, capacity 80

Sprung dance floor with harlequin cover, barre & mirrored wall, panoramic views across East London.

£ Standard Rate £2460 pw / £615 pd
Charity Rate £1560 pw / £390 pd

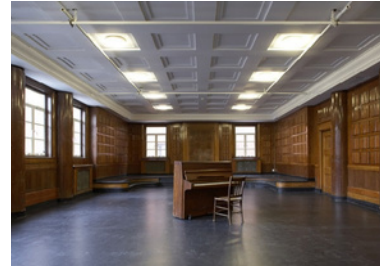


Studio 3

3rd floor, 15m x 14m, capacity 80

Large airy studio with views across East London, harlequin dance floor, full blackout available.

£ Standard Rate £1900 pw / £475 pd
Charity Rate £1240 pw / £310 pd



Court Room

1st floor, 15.5m x 7.5m, capacity 60

Atmospheric oak panelled walls, harlequin dance floor, small raised stage, lighting rig and blackout available.

£ Standard Rate £1740 pw / £435 pd
Charity Rate £980 pw / £245 pd



Artsadmin Canteen

Ground floor, capacity 60 seated at tables

Available for private functions in the evenings and on weekends. A range of layouts are available including banquet and cabaret style; and stage can be set up.

Prices are available on application.

Your hire includes:

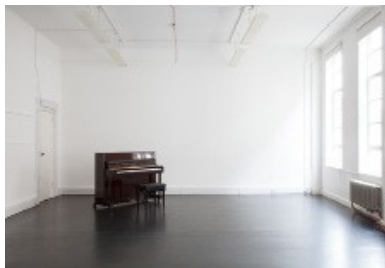
- exclusive use of the space during your booking
- wifi
- shared kitchen (3rd floor)
- showers
- access to cycle racks*
- tables and chairs*
- pianos*
- flipcharts*

Available with additional

charge:

- projector and screen*
- TV with DVD drive*
- printing/photocopying

*subject to availability

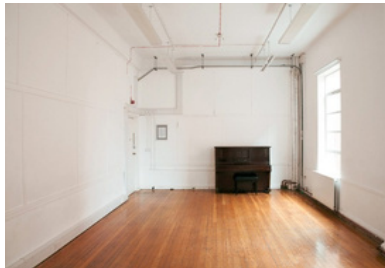


Fire Room

1st floor, 12m x 6m, capacity 50

Classroom style studio, harlequin dance floor, blinds on all windows.

£ Standard Rate £1160pw / £290 pd
Charity Rate £700 pw / £175 pd



Studio 5

1st floor, 8.5m x 4.5m, capacity 40

Classroom style studio, wooden floor, blinds on all windows.

£ Standard Rate £820 pw / £205 pd
Charity Rate £380 pw / £95 pd



Theatre

Ground floor, 10m x 9m (stage), capacity 280 (+50 on stage)

1930s theatre with original art deco features. Fitted with a cinematic projector and screen, full lighting rig and PA system, the Theatre is available for conferences, performances, technical rehearsals and standard rehearsals. Technical support is available.

Prices are available on application.

All prices EXCLUDE VAT. Charity rates apply to charities, non-profits and performing arts companies.

For details on the building's access features visit artsadmin.co.uk/accessibility

Regular studio hours are 10am – 6pm, Monday – Friday. Hires outside of these hours are subject to additional duty management charges. Weekend surcharges apply to extended weekly hires.

Public events and filming are possible by negotiation at separate rates. Conferences are charged per delegate.

For details and any queries, contact Samuel Skoog on 020 7247 5102 or samuel@artsadmin.co.uk.