

Lab 2026

Guidance for applicants



Photo by Tiu Makkonen

Artsadmin

About Artsadmin Lab 2026	3
Studios & Facilities	5
Eligibility	7
Criteria	8
The Application Process	10
Frequently Asked Questions	16

Artsadmin is committed to making Artsadmin Lab as accessible as possible. We recognise that our systems and processes may create barriers, and we welcome conversations about access needs at any stage. If you experience any barriers or would like support with your application, please get in touch.

Email: access@artsadmin.co.uk **Phone:** 020 7247 5102

We also welcome your feedback on this document. Please share your thoughts using this form:

<https://forms.cloud.microsoft/e/mUAX2bbgs6>

About Artsadmin Lab 2026

Artsadmin Lab is a curated residency programme supporting **6 contemporary performance artists** to develop new ideas at an early stage. Our Lab prioritises experimentation, learning and artistic process, without pressure to produce a finished outcome.

All residencies take place at Toynbee Studios and are supported by the Artsadmin programme team.

Lab artists receive:

- One week residency at Toynbee Studios
- £1,000 financial support per artist or project
- One year of ongoing mentorship
- Access to the Artsadmin Lab Alumni Network
- Opportunities to share work through Artsadmin programmes

Cohorts and Themes

Artsadmin Lab runs two themed cohorts in 2026:

Cohort 1: Roots 24–28 August 2026

Projects could explore origin, ancestry, place, lineage, memory and grounding.

Cohort 2: Repair 12–16 October 2026

Projects could explore healing, care, repair, restoration, rebuilding and futures.

Key Dates

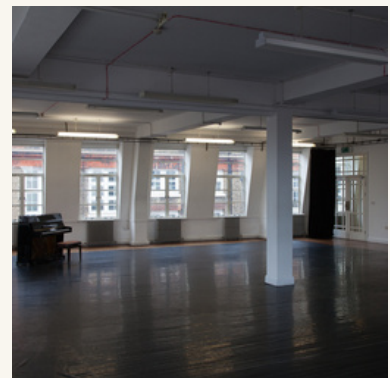
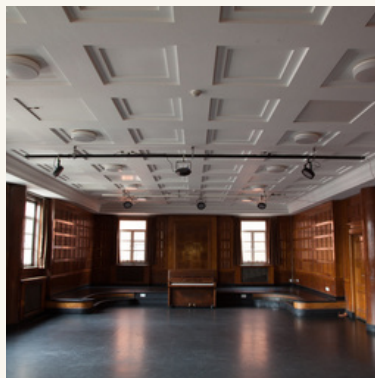
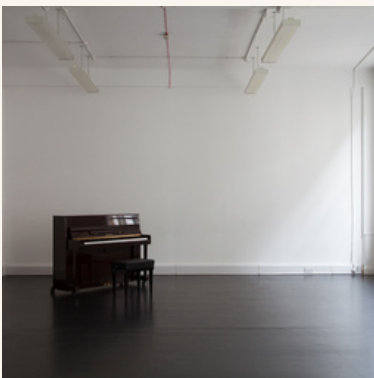
- Submission Portal open for EOI: 30 June 2026
- EOI deadline: 14 July 2026, 12pm
- EOI applicants notified: 29 July 2026
- Panels: 3 & 4 August 2026
- Final artists notified by: 7 August 2026
- Residency 1 - Roots: 24–28 August 2026
- Residency 2 – Repair: 12–16 October 2026

Studios & Facilities

Artsadmin Lab residencies take place at Toynbee Studios in East London; each Lab artist is allocated one studio. These spaces support a range of live and interdisciplinary practices and are suitable for research and development work.

At the panel stage, shortlisted artists will be asked about their studio preferences and practical or access requirements.

Artsadmin staff will do their best to allocate the most suitable studio based on project needs, access requirements and availability. While we aim to match artists to appropriate spaces, specific studios cannot be guaranteed.



Equipment support: Where available, Artsadmin can loan basic equipment to support Lab residencies, such as speakers, microphones, tripods and simple technical accessories. Availability may vary, and detailed requirements should be discussed during the onboarding stage.

Access note: Toynbee Studios includes a range of accessible facilities, and we welcome conversations about access needs. Please share any access requirements during panel stage so we can plan appropriate support.

You can find more information about Toynbee Studios and its facilities here: <https://www.artsadmin.co.uk/toynbee-studios/>

Eligibility

Artsadmin Lab 2026 is open to:

- UK-based contemporary performance artists
- Artists aged 18 or over
- Artists at any stage of their career

To be eligible, you must have participated in at least one Artsadmin Artist Support Programme activity between **1 July 2025 and 1 July 2026**, including:

- Morning Creatives
- Homework Club
- Creative Support Sessions

If you have not yet taken part, you can become eligible by attending an Artsadmin artist support activity before the application deadline.

What we are looking for:

Artistic curiosity and experimentation

Work that demonstrates an artistically ambitious live idea that engages with the Lab themes and shows a commitment to interdisciplinary and experimental ways of working.

Risk and need for support

Work that is vulnerable or at risk of not being made due to factors such as subject matter, setting, who the artist is, or how the work is made, and that would meaningfully benefit from this support.

Support Suitability

Work that can be meaningfully supported through the Lab, using Artsadmin's resources and experience, based on its scope and development needs.

Ethical Considerations

Work that considers access, inclusion, and sustainability within the process, the content, and the people involved.

What we are not looking for:

Work that does not centre contemporary performance or live practice - Projects that sit outside or do not intersect with performance based or live art practices.

Work that relies on unpaid or unsourced labour - Projects that involve significant participation from people or communities who are not appropriately paid, reimbursed or supported for their time and contribution. (This does not include professional collaborators from the arts sector who are salaried or participating as part of their existing roles.)

Public presentations or public sharings - Lab does not support public performances, exhibitions, sharings or showcases. During the residency, Lab artists can invite Artsadmin staff, critical friends, and fellow Lab artists to view work-in-progress and offer informal feedback in a closed setting.

Finished or near-finished work - Projects that are already fully developed or ready for presentation.

The Application Process

This process takes place in two stages:

1. Submission of a short Expression of Interest (EOI)
2. A Lab Panel conversation for shortlisted applicants

The Expression of Interest (EOI)

Each cohort will support three artists.

Applicants must apply to one cohort only.

You can apply in a way that works for you:

- A written application, or
- A video application (up to 10 minutes)

Video applications must include captions. Captions can be created using video or editing platforms such as YouTube or Canva and should be checked for accuracy.

The EOI form will ask you to:

- Briefly describe your artistic practice
- Outline the project or idea you want to explore and how it relates to the cohort theme
- Reflect on accessibility, inclusion and/or sustainability
- Explain why the Artsadmin Lab is timely for you now

Written responses are limited to **200 words per question.**

We ask all applicants to consider **access, inclusion and sustainability** within their proposal.

Access: You might reflect on how access is embedded in the work, including how audiences or participants encounter and engage with it. You might consider how barriers are addressed through well-considered formats and access measures, such as captions or flexible ways to take part.

Inclusion: You may wish to describe how the work thinks about care, consent and power within its content, process or relationships. This could be reflected in who or what is centred, how stories or people are represented, or how participation is invited and supported.

Sustainability: You could consider how the work is conceived in relation to people, labour, time and materials. This might include ethical approaches to making, thoughtful material and environmental choices, or how the work engages with sustainability as part of its content or focus.

Supporting Material

Supporting material helps us understand your practice.

You may submit one item only, either:

- One uploaded file, or
- One public link

Please note:

- Choose something recent and relevant
- Label materials clearly
- Keep descriptions brief
- Uploaded documents must be no more than 5 pages

We cannot consider additional material submitted outside the form or after submission.

Access Needs

You will also be invited to share any access requirements or support needs to ensure you can fully participate in panel conversation and residency.

Data, Privacy and Consent

Artsadmin will use the information you provide to assess your suitability for the Lab residency programme.

Your data will:

- Be shared only with Artsadmin staff and panel members
- Be stored securely
- Be handled in line with UK data protection law (UK GDPR)

You may request access to, correction of, or deletion of your data at any time.

EOI Outcomes

All applicants will be notified by email. While we can't provide individual written feedback due to capacity, you are welcome to book a creative support session to receive feedback through a conversation with us about your work.

Lab Panel

A selected number of artists will be invited to take part in a Lab Panel. Shortlisted artists will join a 45-minute panel conversation, which includes a 5–10-minute presentation of their residency proposal. This presentation can be shared in a format that best reflects the work and should introduce the key ideas, approach, and context for the proposed residency.

The presentation will be followed by a conversation with the panel, offering space to discuss the proposal in more depth, expand on ideas, and respond to questions. This discussion may also explore where the work is currently at and how the residency could support its next stage of development.

Panel conversations will be recorded for assessment purposes. Following the panel conversations, all applicants will receive a response outlining the outcome, along with feedback on their proposal.

Frequently Asked Questions

Can artists apply as a pair or collective?

Yes. Applications from pairs or collectives are welcome. One person should apply as the lead applicant. Any financial support allocated to one applicant to be shared between collaborators.

Do artists need to attend every day of the residency?

Artists are encouraged to make full use of the residency period, but there is flexibility. You will not be penalised if you are unable to be present every day. You will not be offered additional studio days if you miss time.

Is accommodation provided as part of the residency?

No. Accommodation is not provided as part of Artsadmin Lab, and artists should plan for this independently.

Is there a public sharing or presentation at the end of the residency?

There is no requirement to present a finished work.

Opportunities for informal sharing may arise, but any participation is optional and will be discussed with artists in advance.

How can the £1,000 financial support be used?

The purpose of £1,000 is to allow artists to work full-time at Toynbee studios by covering personal living expenses (rent, food, bills etc.) Artists may also choose to spend the money on materials, travel costs or working with collaborators. You are not required to provide a budget.

Can I apply if I'm not London-based?

Yes. Artsadmin Lab is open to UK-based artists. You do not need to be based in London to apply, but you should be able to travel to Toynbee Studios for the residency period, using your stipend.

Can I visit the studio before applying or before the residency starts?

Toynbee Studios is a busy working building, and studio visits are limited due to regular hires and activity.

If you have questions about the space or would like to understand whether it might be suitable for your work, you're very welcome to get in touch by emailing hires@artsadmin.co.uk, and the Studios team will be happy to help where possible.

Contacts

If you have any questions about eligibility, access, or the application process, please contact:

admin@artsadmin.co.uk

Artsadmin